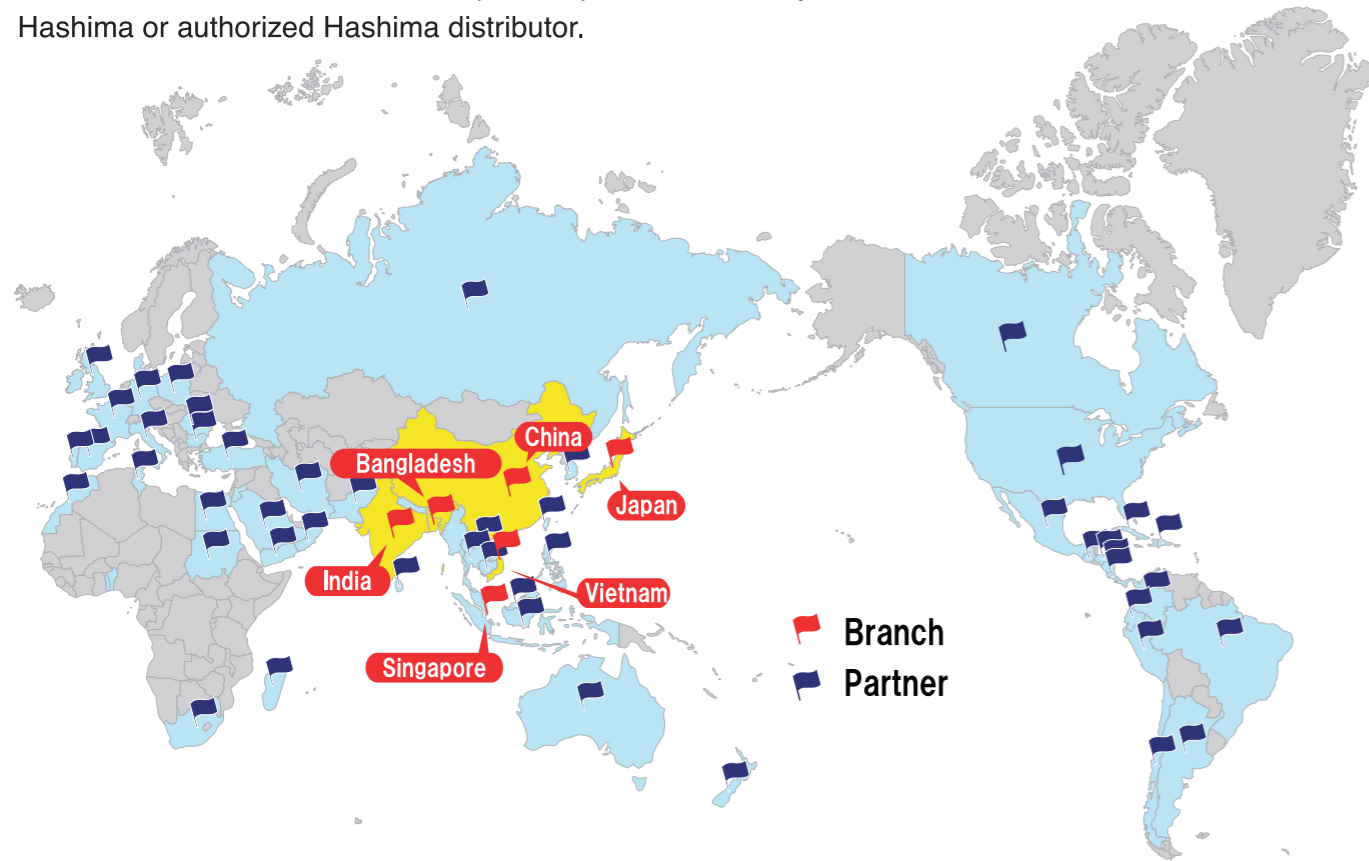


Hashima has been sold Needle Detector more than 114 countries

Hashima's Needle Detector has been sold not only in Japan but also in more than 114 countries around the world, and we have a global network of distributors.

For maintenance and service inquiries, please contact your nearest Hashima or authorized Hashima distributor.



HASHIMA GENERAL CATALOG

Inspection Machine Series



HEAD OFFICE : 7-6, RYOGU Gifu-CITY, JAPAN

TEL 81-58-247-8400, 81-58-245-4501 FAX 81-58-240-5775

KUNSHAN(CHINA) OFFICE : TEL : 86-512-57771838 FAX : 86-512-57771848

SINGAPORE OFFICE : TEL 65-62858131 FAX 65-62858132

INDIA OFFICE : TEL : 91-80-41540315 FAX : 91-80-25592002

BANGLADESH OFFICE : TEL : 880-2-7913655 FAX : 880-2-7913099

VIETNAM OFFICE : TEL : 84-226-3555840 FAX : 84-226-3555841

※Specifications and performance are subject to change without notice due to product improvement.

WEB site



Agent

<http://www.hashima.co.jp/>



New Release!

The best of Needle Detector in the industry

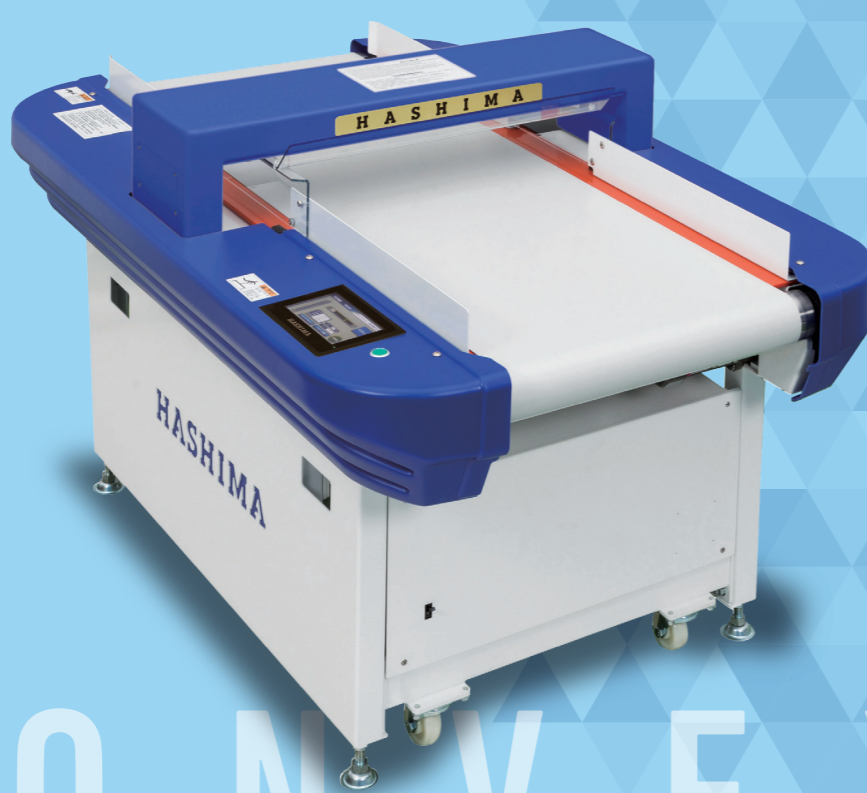
In production since 1994 and soon to be 30 years old .Over 22,000 single type needle detector produced.Over 5,500 two-head type needle detector produced.Cumulative total of needle detector machines: over 27,500 units

※As of July 2023

Conveyor type
Needle detector
(single-head)

HN-880CS
HN-790GS

■ 7inch color LCD



Conveyor type
Needle detector
(two-head)

HN-2880CS
HN-2790GS

■ 7inch color LCD



CONVEYOR TYPE

Selectable 2-mode system Standard mode & AP mode

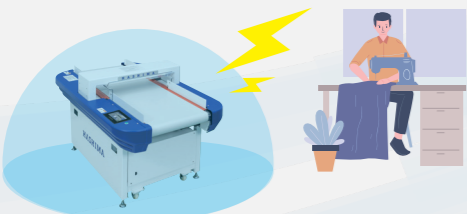
The new CS type is equipped with a Standard mode and an AP mode that emphasizes the passage of accessories with Hashima Original Technology.

Standard Mode

Reference Video for Noise Reduction



Added as a Standard mode for the CS type equipped with new noise cancellation function. In order to achieve high inspection capacity and outside noise that affects the operation of the Needle Detector minimizes the impact.

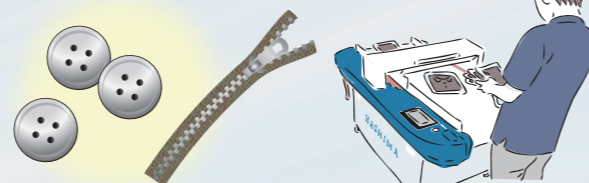


AP Mode (Accessories Pass-through Mode)

Reference Video for AP mode



This mode also emphasizes the passage of clothing accessories and other items. It can be switched when necessary. High detection capability remains the same with stable area sensitivity, and the high passability of accessories compatible with needle detection has been realized. The improved passability enables smooth needle detecting operation.



Fastest conveyor speed in the industry

Hashima's Conveyor Needle Detector has high belt rotation speed, so it can achieve high productivity and improved work efficiency.



Reference Video for conveyor speed

Fe ϕ 0.8mm can be detected with a gate height of 120mm

120 mm height is standard, and 140, 160, and 180 mm are available as factory options. (Refer to factory options below)

**The only one
in the industry.**



Reference Video for Gate Height

SPECIFICATIONS

MODEL	HN-880CS	HN-790GS	HN-2880CS	HN-2790GS
DETECTION METHOD	MAGNET INDUCTION			
DETECTION Bailey	Fe0.8 ϕ sphere or above			
SENSITIVITY ADJUSTMENT	DECIMAL(100steps) or SIZING (6steps)			
DETECTION WIDTH	600mm			
DETECTION HEIGHT	120mm (standard)			
ALARM METHOD	BUZZER POSITION LAMP			
BELT SPEED	40~15m/min.			
POWER SUPPLY	single phase			
RATED OUTPUT	150W			
DIMENSIONS	1598(L) \times 950(W) \times 903(H)		2423(L) \times 1040(W) \times 903(H)	
NET WEIGHT	230kg		374kg	
PRODUCT GUIDER	Standard		Standard	

※Use non ferrous metal accessories for garments. ※Read instruction manual & test machine sensitivity before using. ※The specification is under standard test condition. ※We Have no responsibility that needle chip, iron chip etc. Come out after detecting under non-standard condition.

FACTORY OPTION

MODEL	SNOR HEIGHT	MAX. SENSITIVITY
HN-880CS	120mm	Fe 0.8 ϕ
	140mm	Fe 1.0 ϕ
	160mm	Fe 1.2 ϕ
HN-790GS	120mm	Fe 0.8 ϕ
	140mm	Fe 1.0 ϕ
	160mm	Fe 1.2 ϕ
HN-2880CS	120mm	Fe 0.8 ϕ
	140mm	Fe 1.0 ϕ
	160mm	Fe 1.2 ϕ
HN-2790GS	120mm	Fe 0.8 ϕ
	140mm	Fe 1.0 ϕ
	160mm	Fe 1.2 ϕ

※Please note that the sensitivity level that can be used may be limited by the surrounding environment and the product to be inspected.

H A S H I M A

Equipped with Detection Position Lamp

Hashima's unique sensor head uses a split detection coil, so when there is a detection, a lamp will indicate the position of the broken needle.

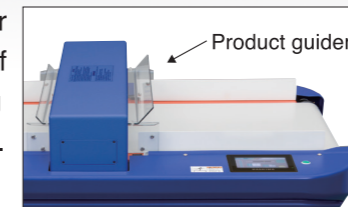


Reference Video for
Detection Position Lamp



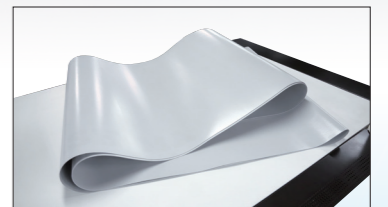
Products Guider as standard

The product guider helps inspection of thick clothing without malfunction.



Equipped with Hashima original conveyor belt

Conveyor belts used in Hashima's needle detector are developed and manufactured in-house.



Supper Fine Mode is equipped as standard

Hashima's unique sensor head system makes it easier for accessories to pass through by inspecting them in super fine mode. (Conveyor speed moves slowly.)



Reference Video for
Supper Fine Mode

Installation Environment Check function is equipped

With Installation Environment Check Function, you can find the suitable site for Needle Detector.



Reference Video for
Installation
Environment

Auto PreChecker®

Simplification of daily inspection! Increased work efficiency!

Auto PreChecker®

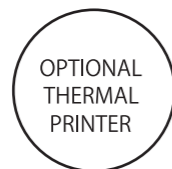
Auto PreChecker makes sensor checking more accurate and quicker. By using PreCheck Bar (Specialized test block) & system, you do not need to check each coil one by one, the system checks sensors automatically. Also you can keep the PreCheck result if you prepare the optional printer. (※PATENT PENDING, TRADEMARK REGISTRATION PENDING.)



Reference Video for
Auto PreChecker



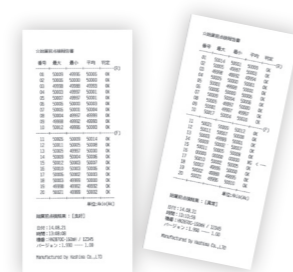
PreCheck Bar



OPTIONAL
THERMAL
PRINTER



HASHIMA EXCLUSIVE PRINTER
BY CITIZEN



PreCheck Report

Optional accessories for Needle Detector

HN-S2 Chuter



▲Auto sorting Chuter



▲HR-5050N



▲Count Monitor



▲Foot Switch

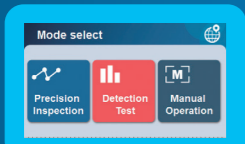
Hashima's Needle Detector inspections are changing!

Needle Detector New Inspection Service

A new inspection service that provides factory-level inspections at the installation site by authorized Hashima technicians.



Compatible models HN-670, 870, 880C series



Calibration screen



Data can be imported to PC

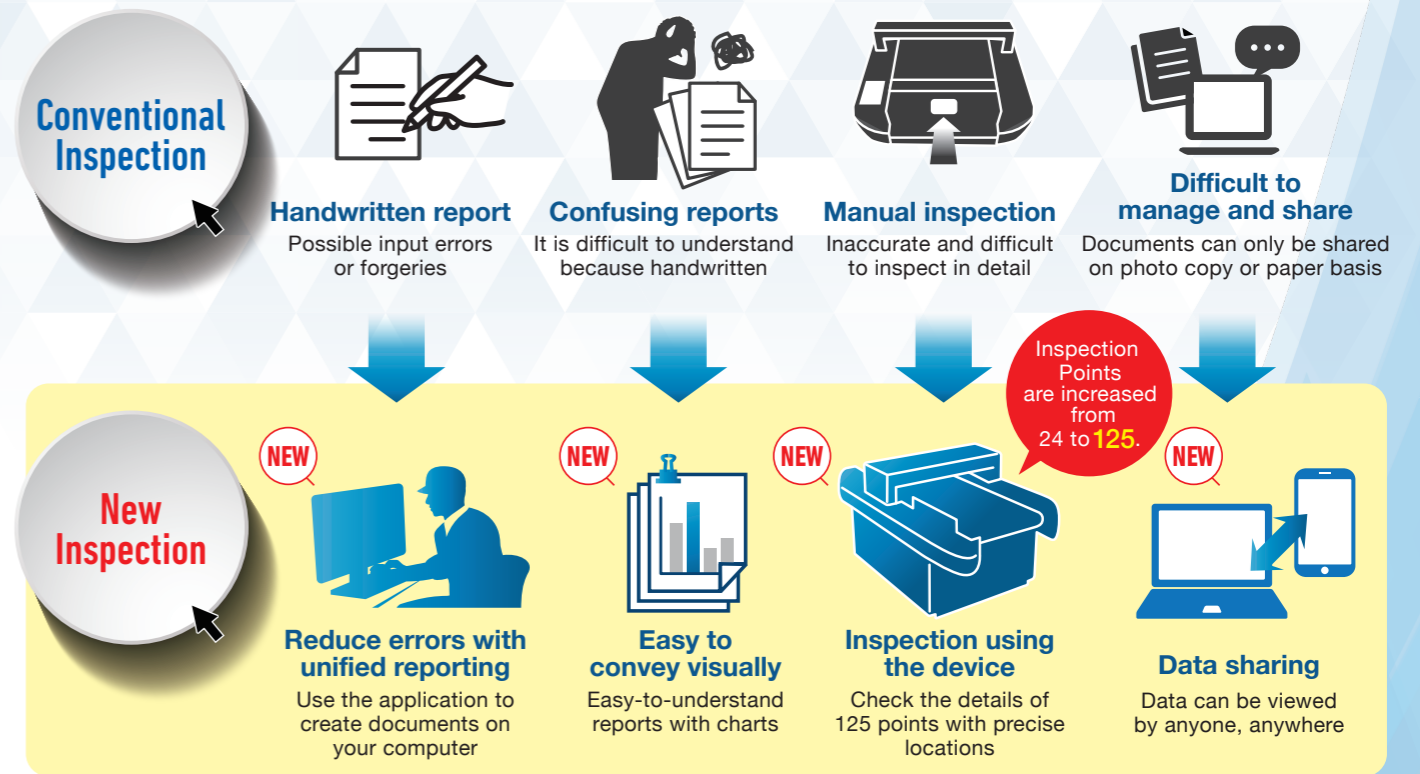
Hashima Needle Detector Inspection Service Introduction Movie

Check out the video



Scan the QR code on the left with a barcode reader on your smartphone or tablet device.

Differences from Conventional Inspections



Hashima Needle Detector New Inspection Service

01 A new automatic inspection system automatically and precisely inspects **125 locations** within the detection area. Graphical indication of good/failure.

Advantages

- Automatically inspectable
- Graphing of inspection results

Detection signal status Single / Two-head (front)

Numerical data is displayed in a graph (Data is imported from Machine to PC.)

automatically and precisely inspects 125 locations

02 Graphical representation of the installation environment and inspection of operating conditions important for Needle detector.

Advantages

- Confirmation of the machine's installation environment
- Check Needle Detector and operating conditions

Installation environment conditions

Needle Detector operating status

The appropriateness of the installation environment of Needle Detector can be inspected and confirmed.

Graphing of proper inspection data for installation environment and operating conditions (Data is imported from Machine to PC.)

03 Electronic data with certificate and report.

Advantages

- Approval with report and inspection results
- Electronic certificate issued

Report-1

Report-2

Hashima confirmed and authenticated

Issued

Needle Detector precision inspection certificate (electronic certificate)

After inspection, a "Report-1-2" will be issued, and if the level is cleared A certificate of precision inspection is officially issued.

This precision inspection service is performed by an authorized Hashima technician. If the inspection results do not meet the requirements, certificate will not be issued.

04 The original inspection report is stored on the Hashima Cloud Server and can be accessed at any time and from anywhere. You can check it.

Advantages

- QR code on the certificate
- Secure service for easy confirmation of inspection results

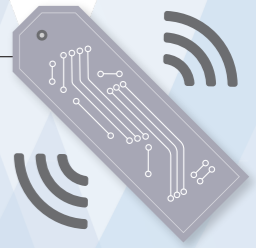
PDF certificates and reports can be downloaded from the Hashima Cloud server from anywhere by reading the QR code, allowing you to share information with your customers.

QR code is included on the certificate, allowing easy confirmation of test results.

Line-up for RFID (Electronic Tag) Reading Device

What is RFID tag (Electronic Tag)?

Utilizing RFID tags (electronic tags), which are rapidly becoming popular in the apparel industry, Hashima has developed the world's first product that combines Needle Detector with RFID (electronic tag) reading device. RFID (Radio Frequency Identification) is a technology that uses radio waves to wirelessly communicate with electronic tags on which information is written.



First in the industry! RFID data can be acquired with Needle Inspection.

HN-R880CS



Needle Detector sensor head + RFID reader integrated equipment

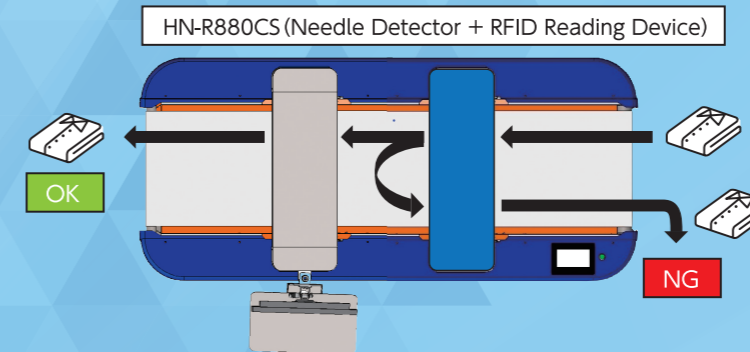
- With only one operation of the product, Needle Inspection and RFID reading are possible.
- Since it is an integrated equipment, it requires less installation space.
- By utilizing RFID tag readers, products can be read quickly and the number of inspections can be counted accurately.
- RFID tags can be read and Needle Inspection history can be linked to products. It helps to improve traceability.
- Even forgetting to attach RFID tags can be detected.
- Historical data can be exported to CSV. Needle Inspection history and quantity count data can be utilized.

Linkage counting date with Needle Inspection History

Display for registered product information

Accurate counting of products

Product real-time display



MODEL NAME	HN-R880CS
PRODUCTS NAME	NEEDLE DETECTOR + RFID READING DEVICE VOLTAGE & RATED
OUTPUT	SINGLE PHASE,200W
DETECTION ABILITY	120mm(Feφ0.8mm), 140mm(Feφ1.0mm), 160mm(Feφ1.2mm), 180mm(Feφ1.5mm)
BELT SPEED	40~15m/min
DETECTION WIDTH	600mm
MACHINE SIZE	2,423L×1,040W×903H(mm)
MACHINE WEIGHT	320kg

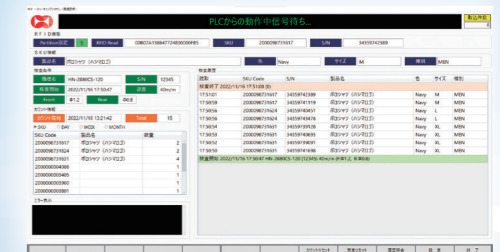
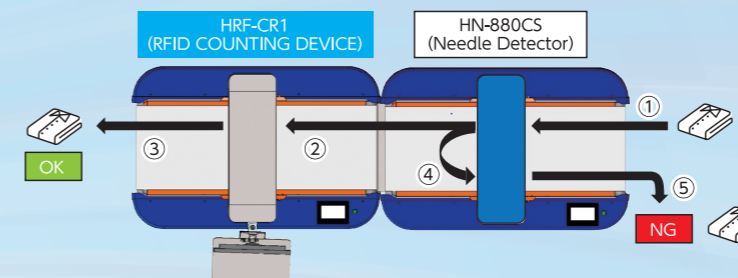
RFID COUNTING DEVICE FOR HASHIMA NEEDLE DETECTOR

HRF-CR1

- Used in conjunction with Hashima Needle Detector
- Accurate product counting linkage with Needle Inspection Record by high-performance RFID reader



- By using RFID tag readers, products can be read and count accurately.
- In conjunction with a needle detector, the inspection conditions and passage history are stored together.
- Data will be exported by CSV File.
- Find products without RFID Tag.
- Use Global Standard RFID Reader.
- Multilingual support (Japanese, Chinese, English, Vietnamese)
- Product information registration (data input/output)



Management Software

MODEL NAME	HRF-CR1
WORKING WIDTH	600mm
VOLTAGE	1P220V
OUTPUT	150W
MEASUREMENT	1,598(L) X 950(W) X 903(H)
WEIGHT	230kg

Conveyor Type Metal Detector

High-performance sensor and Color LCD Touch Panel realize easy operation. Inspection machine for all metals !!



HASHIMA Conveyor Type Metal Detector

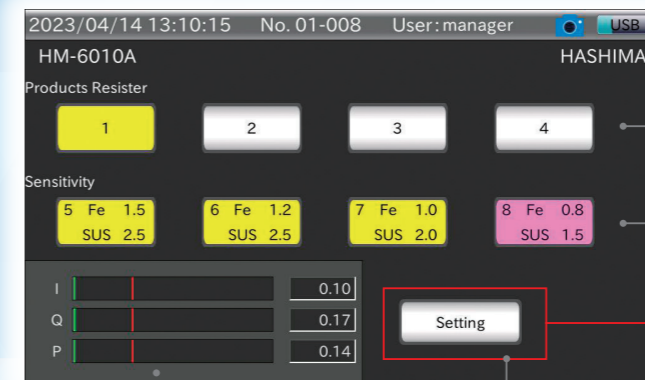
HM-6010A
HM-6020A



Color LCD Touch Panel



Reference Video for Metal Detector



Memory Function

Sensitivity Setting

Detected Value Indication Monitor

Setting

Setting Menu



FEATURES

- Detects all metals**
 Contaminants can be detected regardless of the type of metal. Detects the highest sensitivity Fe ϕ 0.8mm sphere, SUS304 ϕ 1.5mm sphere. (100mm height)
- Stable and highly accurate detection**
 A unique sensor head and software control enable stable and highly accurate detection of metallic foreign objects.
- Uses Color LCD Touch Panel with excellent operability**
 Easy to operate with advanced touch panel.
- Simple Selection for Standard Sensitivity Level Setting**
 You can easily select the Sensitivity Level Setting with the standard ferrous ball size.
- Equipped with memory function**
 You can set the sensitivity according to the product to be inspected. Equipped with a memory function that can register product settings.
- Multilingual display and audio**
 Supports Japanese, English and Chinese. Multilingual display and voice make it easier for operator.

MODEL	HM-6010A	HM-6020A
DETECTION METHOD	ELECTRIC INDUCTION SYSTEM	
MAX. SENSITIVITY	Fe ϕ 0.8mm sphere, SUS304 ϕ 1.5mm sphere	Fe ϕ 1.2mm sphere, SUS304 ϕ 2.0mm sphere
DETECTION WIDTH	600mm	
DETECTION HEIGHT	100mm	200mm
ALARM FUNCTION	ALARM, CONVEYOR REVERSE FUNCTION	
BELT SPEED	20m/min	
VOLTAGE	SINGLE PHASE	
RATED OUTPUT	150W	
MEASUREMENT	1,600mm(L) X 1,050mm(W) X 1,200mm(H)	1,600mm(L) X 1,050mm(W) X 1,300mm(H)
WEIGHT	290kg	300kg

LARGE SIZE CONVEYOR TYPE NEEDLE DETECTOR HN-1380C/HN-1580C



PHOTO:HN-1380C

■ SPECIFICATION

Model	HN-1380C/1580C
Detection Method	Magnetic Induction System
Detection Sensitivity	Fe φ 1.2mm Sphere or above
Detection Levels	10 stages(100 steps) or Sizing (6 steps)
Detection Width	1300mm/1500mm
Detection height	160mm (150mm with Guider)
Alarm Method	Buzzer・Position lamp
Belt Speed	15m-40m/min
Power Source	Single Phase
Dimension	1,830 (L) x 1,800(W) x 1,000mm(H)
Weight	495kg
Product Guider	Standard

*Use non ferrous metal accessories for garments.
The specification is under standard test condition.
The sensitivity may vary depending on the tested product and operating environment.
*we are not responsible for any damage caused by chipped iron as a result of operation under non-standard condition

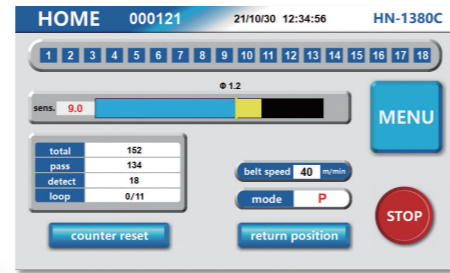
■ FEATURES

- **New sensor head**
With the new sensor head, the detection unit is not subjected to any vibration from the conveyor, and it operates more stably. This enables the industry's fastest speed of 40 m/min.
- **Auto pre-checker**
It is equipped with an auto pre-checker which is used for the pre-operation inspection. Inspection time can be greatly reduced.
- **Super fine mode(40~15m/min)**
Belt speed can be changed from 15m/min to 40m/min, allowing smoother passage of various apparel accessories.
- **Environment test mode**
The machine's installation environment can be tested.
- **Two sensitivity options**
10 Stages method (100 steps) and sizing method (6 steps) can be selected
- **7 Inch Color LCD**
" The use of a color LCD has greatly improved operability and visibility.
"The operation status can be seen at a glance

The industry's fastest speed
40m/min



Auto Pre-Checker



■ 7 Inch Color LCD

HANGER TYPE NEEDLE DETECTOR

HN-1300H

■ SPECIFICATIONS

Model	HN-1300H
Detection Ability	Fe φ 1.0mm Sphere or above
Detection Width	Height 1,300mm Width 130mm
Detection Speed	600pcs/h
Power Source	1P 220V
Rated Output	100W
Air Pressure	5kg/cm ²
Dimension	2,300 (L) x 900 (W) x 2,350 (H) mm
Weight	800kg

※Use non ferrous metal accessories for garments.
※Read instruction manual & test machine sensitivity before using.
※The specification is under standard test condition.
※We have no responsibility that needle chip, iron chip etc. come out after detecting under non-standard condition.



■ FEATURES

- **Speedy and smooth needle detecting**
It is possible to detect the products with hanger at 6sec/pc
- **Improvement of detecting precision**
φ 1.0mm steel is detected by detecting width 130mm. Detecting precision is improved by adopting newly developed detecting sensor. Detecting length is 130cm. So long size products (suit, coat, pants, etc.) can be detected.
- **Improvement of performance for an outside noise**
New detecting sensor unit has also good noise performance. When new type is compared with previous type, 30% reduced influence by an outside noise.
- **New sensitivity level monitor**
A level monitor adopts new design and is easier to check the sensitivity level. Detecting position lamp is divided to 20 pieces so that it is also possible to show foreign object exactly, detecting position exactly.
- **Auto assortment**
This needle detector can assort goods products or not automatically on the processing bringing-----set out-----detecting-----assorting. The operator can do needle detecting efficiently without stop the system.
- **Data collection**
The detecting result is able to be collected to your computer (windows XP) by optional software from the needle detector. The collected data can be used for each purpose.

TABLE TOP TYPE NEEDLE DETECTOR

HN-450N



■ FEATURES

- As indicator on control panel is indicates the position of broken needles, it is easy to find broken needles.
- As detecting adjustment can be changed by 6 steps, it is easy to adjust in accordance with the sizes and kinds of accessories.

■ ATTENTION

- Table top needle detector is designed to detect magnetic metal objects in ladies, children's and men's clothes.

■ OPTION

- **Table for HN-450N**
HN-450N can be built in the optional table. The surface of the table and the needle detector are same height using this table. This table is helpful for detecting work.

■ Control panel



Sensitivity adjustment SW

■ SPECIFICATIONS

Model	HN-450N
Detection Method	Magnetic induction
Detection Sensitivity	MAX 110mm height by steel needle (φ0.6×L33)
Detection Levels	6 Levels
Alarm Method	Buzzer
Detection Width	80mm×450mm
Power Source	Single phase
Rated Output	(appr.) 10W
Dimension	590 (L) × 400 (W) × 82 (H) mm
Weight	(appr.) 9kg

※Use non ferrous metal accessories for garments.
※Read instruction manual & test machine sensitivity before using.
※The specification is under standard test condition.
※We have no responsibility that needle chip, iron chip etc. come out after detecting under non-standard condition.

HANDY TYPE NEEDLE DETECTOR

HN-30S/35W

- Updated detection function
- Notice by light and buzzer
- Always keep clean by antimicrobial processing



HN-30S



HN-35W
(Wide type)

Antimicrobial

■ Features

- **φ 0.8 mm steel ball is detected**
This new handy type needle detector can detect φ 0.8mm steel ball and is good for a steel pin
- **Easy to use with clean**
New design and Antimicrobial processing, using long time with no stress
- **Detecting wider area (HN-35W)**
Unit surface is wider and easy to detect by Spot/Wider sensitivity select switch
- **Sensitivity select switch(HN-30S)**
The new handy type needle detector adopts Hi/Low sensitivity select switch
- **Battery save function**
Under stand by, the battery mode is changed to save mode automatically, which saves battery consumption. When take it in hand, the machine starts automatically. New designed detecting circuit cuts electric power consumption.
- **Large size LED lamp and buzzer**
It's easy to check the detecting result by adapting large size LED lamp and buzzer.



Based on the results evaluated by ISO22196 method, SIAA is displayed on products with quality control and information disclosure according to Antimicrobial Product Technology Council guidelines.

Model	HN-30S	HN-35W
Detection Method	Magnetic induction	Magnetic induction
Detection Ability	Hi: φ 0.8mm Sphere Low: φ 1.0mm Sphere	φ 0.8mm Sphere
Detection Area	Spot / Wide
Alarm Method	Buzzer, LED lamp	Buzzer, LED lamp
Detecting Area	25mm(W) × 50mm(L)	48mm(W) × 93mm(L)
Power Supply	1.5V dry cell battery × 2(AA)	1.5V dry cell battery × 2(AA)
Dimension	58(W) × 195(L) × 50(H)mm	56(W) × 245(L) × 67(H)mm
Weight	210g	300g

※Use non ferrous metal accessories for garments.
※The specification is under standard test condition. We have no responsibility for needle chip, iron chip etc. Come out after detection under non-standard condition.



X-ray inspection AI support system

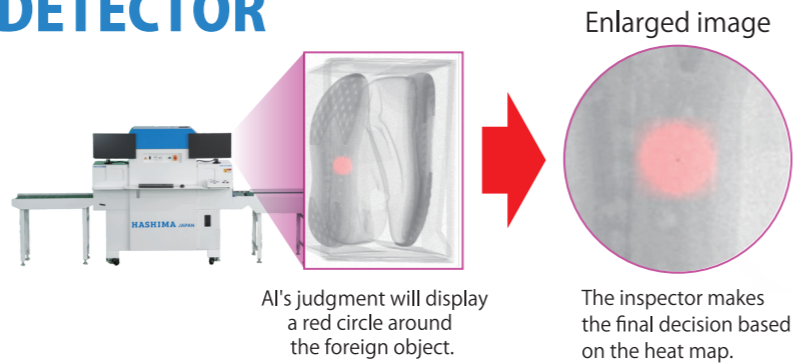
AIXDETECTOR

(INTERNATIONAL PATENT PENDING)

What is HASHIMA AIX-DETECTOR

AIXDETECTOR

It is a support software that assists in the visual inspection of foreign objects, consisting of judgment result display software and learning software for more accurate and efficient inspection by installing AI in X-ray inspection. When displaying product images taken by an X-ray inspection system on a monitor, the system can detect foreign objects and display their locations on the monitor using a heat map.



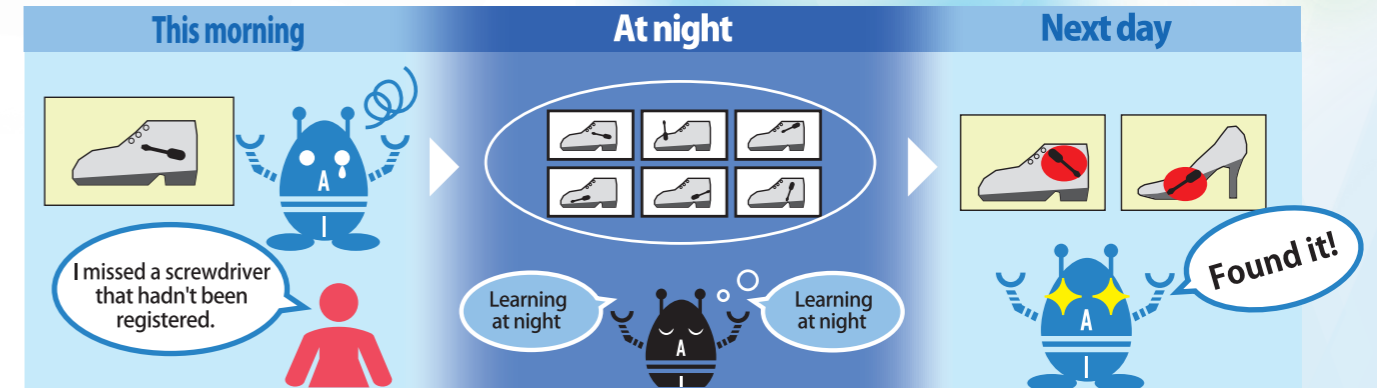
AI will make X-ray inspection evolving more and more.

— The more you use it, the more it evolves. —

AIXDETECTOR

AI that learns every day

Through repeated night time learning, AI will eventually become like experienced and skilled operators



By registering foreign objects that have been overlooked, AI will learn them at night, and similar objects can be found in the future. Given its foreign matter registration nature, it can be applied to different products.

AIXDETECTOR

Advantages of AIX-Detector



Improved inspection accuracy and speed

It takes only 0.2 seconds to detect a foreign object of 0.8 mm in size. With the support of AI, the operator can find foreign objects quickly and reliably.



Improved inspection quality variation.



Visual inspection by an operator can be inconsistent and erroneous. The judgment results may vary. With the help of AI, the inspection is always performed with the same standard.



Reference Video for X-ray inspection machine



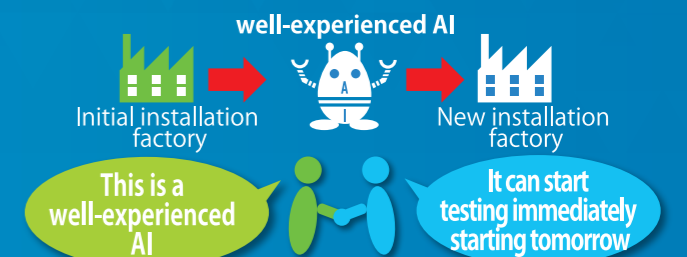
Reduce human resource development costs

In the past, inspection quality (variation/speed) was dependent on the operator's experience, however with the support of AI, high inspection quality can be maintained regardless of the operator's experience. This means that "visual inspection work" will be leveled out with the introduction of AI and anyone can do in a short time. There will be no need to spend time and money on training operators.



Maintain high inspection quality and easy transfer to other factories

By installing a highly experienced AI into a newly established factory, it is possible to achieve the same testing quality as the existing factories and Inspection guidance by skilled operators can be kept to a minimum.



X-Ray INSPECTION MACHINE

X-Ray Inspection system

FUNCTION

- High Precision Sensor**
 Maximum Sensitivity in the industry by new line sensor. This mode is equipped with high precision X-ray line sensor and realizes low noise and speed up.
- Double Direction Shooting (Dual Sensor)**
 Double Direction shooting (0 degree and 25 degree) can provide 2 different angle image data by one operation. It is quite useful to detect foreign object.
- Traceability**
 All scan image data can be saved and can print out the scan image data No. and also can print out the scan image data itself and transfer it at a distance through internet.
- Multi-Language Support**
 We suppose that the machine will be operated overseas, so that it supports Japanese, English and Chinese.

- Full Automatic Operation**
 X-ray irradiating, Conveyor Start, Image capture and saving are controlled by one operation automatically.
- Variety of Monitor setting**
 It is possible to select variety of setting (one image with one direction, one image with 2 direction) for detecting object.
- Energy Saving**
 This model checks the operation condition and controls the power consumption automatically.

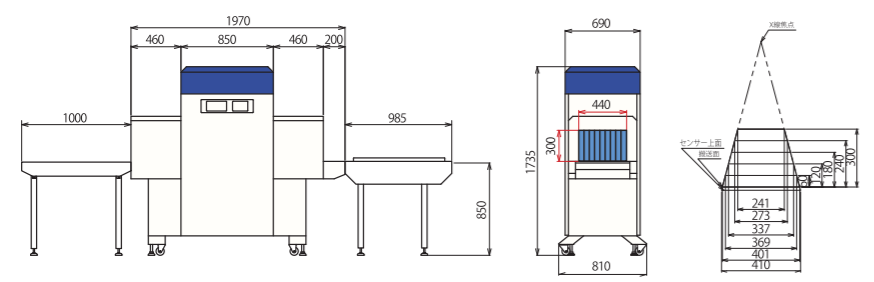


HNX-S665NDS

HNS-S410NDS
 For small object to shoes (knee-high boots) and process inspection



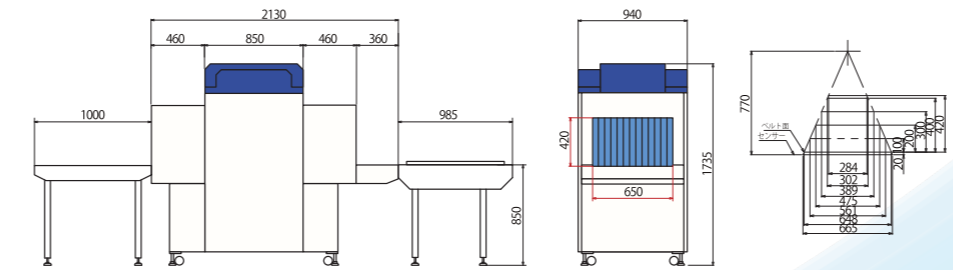
■ HNX-S410N/HNX-S410NDS
 Installation dimension



HNX-S665NDS
 For small object to garments



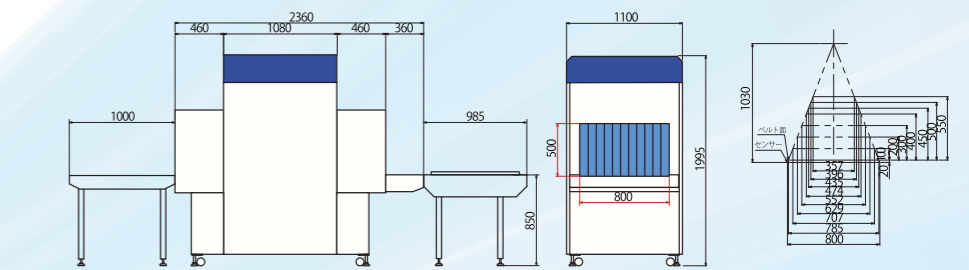
■ HNX-S665N/HNX-S665NDS
 Installation dimension



HNX-S800NDS
 The sensor size is 819mm width
 For large size garment



■ HNX-S800N/HNX-S800NDS
 Installation dimension



FUNCTION

Main Screen

Renewal of Software

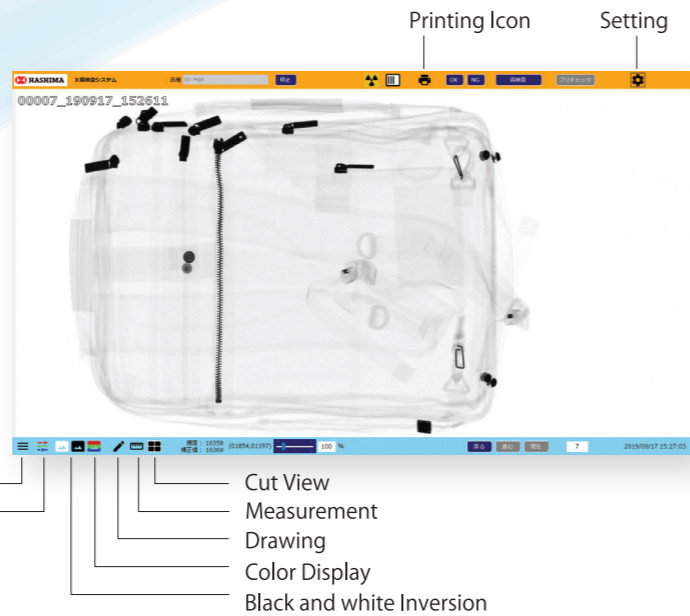
Iconizing required functions to mark them intuitive. The new software copes with both advanced settings and simple operations so that old version user also can use the new software.

Image adjustment

An operator can call a number of conditions by pressing iconized adjustment button. This function will help to fine out foreign object that difficult to find out.

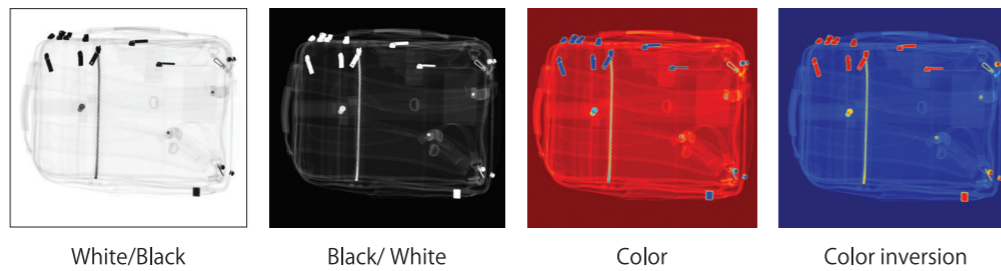
Counter

Since each scan data has running No. and the operator can check the before and after scan data easily by this counter function.



Full color Display

It is helpful to find our foreign object by full color display



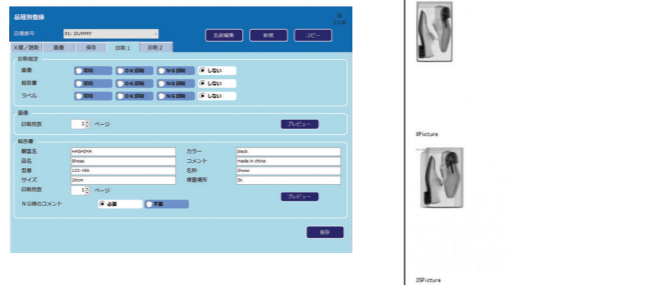
Drawing Function

An operator can put comment to the scan data directly.

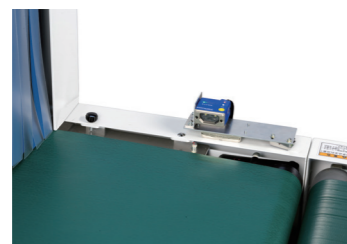


Report Creation Function

It is easy to create each report based on Customer name, Lot No., Size, Color.



OPTION

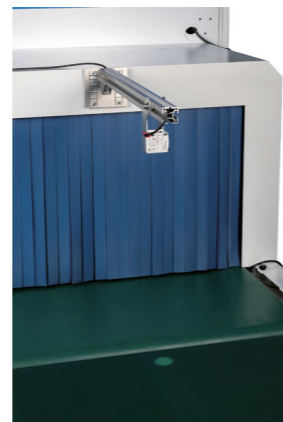


Barcode Reader System

Automatically read the barcode on the side of the boxed product. The imager system uses a CMOS sensor for fast reading speed and reliable reading of barcodes on moving products.

Spot Sensor System

Conventionally, the presence or absence of products on the conveyor was checked by using photoelectric sensors, which blocked the light from the passing products. In this method, the package itself sometimes allows light to pass through, causing the machine to malfunction. By using a spot sensory system, it will reliably recognize even the packaged products.



SPECIFICATIONS

Model	HNX-S410N	HNX-S410NDS	HNX-S665N	HNX-S665NDS	HNX-S800N	HNX-S800NDS
X-ray Angle	0° 25° (Dual Direction)					
Tunnel Size	400 (W) × 300 (H) mm		690 (W) × 420 (H) mm		850 (W) × 500 (H) mm	
Belt Width	460mm		648mm		785mm	
Belt Speed	Adjustable Belt Speed 15~25m/min					
Conveyor Style	Double Conveyor	Single Conveyor	Double Conveyor	Single Conveyor	Double Conveyor	Single Conveyor
Object Weight	Max 5kg					
X-ray Sensor	Straight Type Line Sensor					
Sensor Length	409.6mm		665.6mm		819.2mm	
Sensor Pixel Size	0.4mm					
Sensor Pixel Number	1,024pixels		1,664pixels		2,048pixels	
X-ray Tube Voltage	30~75kV					
X-ray Tube Current	0~3mA					
Operating System	Windows10 (64bit)					
Memory	8GB					
Hard Disk	2TB					
Image Processing	Brightness, Contrast, Sharpness, Zoom					
Data Saving	Automatic or Manual Saving					
Data Format	TIFF/BMP/JPEG (Plurally Selectable)					
Display	23.8inch Full Definitions×2 (Standard)					
Image Data Print	Automatic or Manual Printing					
Safety Sensor	Hand Insertion Sensor					
Dimensions	1970 (W) × 810 (D) × 1735 (H) mm		2130 (W) × 940 (D) × 1735 (H) mm		2360 (W) × 1100 (D) × 1995 (H) mm	
Weight	700kg		800kg		900kg	
Power Supply	AC90~120V 50/60Hz					
Power Consumption	0.8KVA					
X-ray Leakage	1 μSV/h以下					
Operating Temperature	5~35°C					
Operating Humidity	20~80%RH (With Non Condensation)					
Standard Accessories	Instruction Manual, Test Piece					
Optional Accessories	Touch Panel, PC Printer (Selectable) Label Printer, Roller Conveyor, Electric Conveyor (Put/Carry Out) , Monitor Stand, Putting Guide, UPS					

OPTION

Auto Conveyor
Any size ones are available



Roller Conveyor
Any size ones are available



Color printer (RICOHSG2200)
Print out the image scan data
Support Windows 64 bit



UPS Uninterruptible Power Source (UPS)
In case of electrical outage, protecting the machine



Label Printer
Print label to trace the products
(Recommend the above model)



Remote Control Switch
Frequent operation is controlled by the button without using the mouse and the touch panel